

Shared vision.  
**Better together**



Shared Business Services

# ePay

The **modular, digital solution**  
to reduce costs and drive efficiency  
in workforce processes



Harnessing digital technologies to streamline services and improve access is a critical component of the 10-Year Health Plan for England. For NHS employees, shifting from analogue to digital makes their work easier, faster and more flexible, so they can focus where it matters; on patient care.



**ePay is a secure, modular system that drives compliance, efficiency and reduced costs across:**



**Travel and expenses**



**Salary claims**  
(including additional hours)



**HR forms**



**Absence**

The introduction of ePay has made it easier for staff to track their claims and for managers to have full visibility of what is going through the system. The technology is user-friendly and the vast majority of staff have embraced it and view it very positively.... Through ePay we are not only saving time and money that can be better spent elsewhere, but **have also taken a significant amount of paper out of our workforce processes”**

**David Everett**

HR Information Manager  
East Suffolk and North Essex NHS Foundation Trust

# Benefits of the ePay solution



## Cost effective

The ePay distance calculator can be set to calculate the shortest or fastest route in order to **calculate claimable mileage**



## Flexible

Available as a complete, integrated solution, or as standalone modules, to **help you stay in control of your budget**



## Efficient

Paper forms can be phased out, supporting documents scanned, workflows speeded up and submission times extended, so time and resources can **be released to more important tasks**



## Accessible anywhere

Available on an online web portal via www, HSCN and N3 networks, giving the convenience of **24/7 access, at work or home, to employees and managers**



## Controlled

Built-in data validation, data integrity and electronic audit trail, and user-configurable authorisation workflows deter fraud and **give you the reassurance you need that processes are fully compliant**



## Insightful

Customised reports give valuable insight and help detect trends, enabling organisations to identify and **realise cumulative efficiencies and savings**



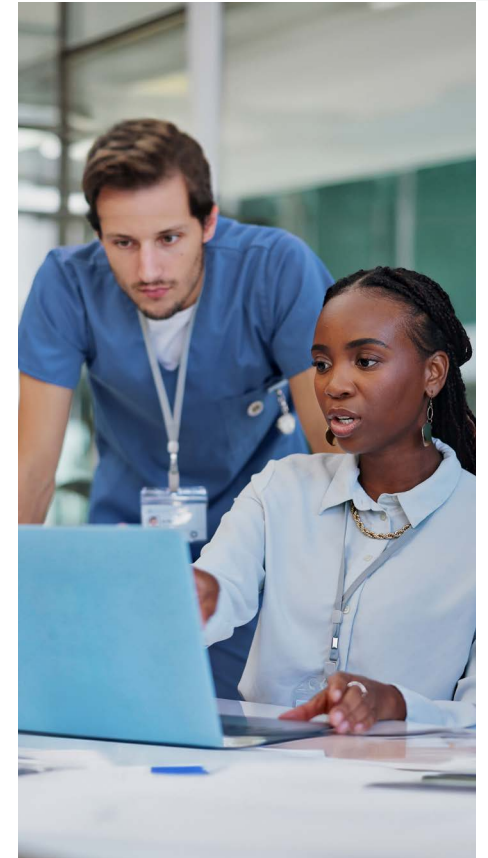
## Accessible

Across smartphone, tablet, laptop and desktop for **an optimal user experience**, whatever the device



## Easy to use

Simple and intuitive to use, with automated progress and closedown notifications, plus online help and e-learning built in for **quick adoption and high user confidence**



**To find out how our ePay solution can help your organisation achieve its objectives and enhance the employee experience please email us at [sbs.hello@nhs.net](mailto:sbs.hello@nhs.net)**

Shared vision.  
**Better together**



Shared Business Services

## Why NHS SBS Employment Services?

Our solutions are designed specifically for the NHS and its employees, adding value in the areas that really matter – enabling the NHS to recruit, retain and support the very best employees to provide outstanding levels of frontline patient service whilst driving down costs and streamlining processes.

For any queries, please contact us on: [sbs.hello@nhs.net](mailto:sbs.hello@nhs.net)



NHS Shared Business Services was created in 2004 by the Department of Health and Social Care to deliver the most cost effective and highest quality corporate services to the NHS. A unique joint venture with Sopra Steria, a European leader in digital services and software development, we make life easier for NHS employees, patients and suppliers, and deliver value for money to the taxpayer.

Proud members of the NHS family, we provide finance & accounting, procurement, workforce, digital and expert advisory services to more than half the NHS in England. Sharing common values and unity of purpose with the rest of the NHS family, our solutions are underpinned by cutting-edge technologies and our teams' expertise, in-depth understanding of the NHS, and commitment to service excellence

For more information, please visit [www.sbs.nhs.uk](http://www.sbs.nhs.uk)