



CASE STUDY

Science Museum Group

Welcome Building and B1 Study Space

Located at the Science + Innovation Park in Wroughton, Swindon, the National Collections Centre houses over 35,000 historic objects from the Science Museum Group Collection. Starting in June 2021, over 300,000 items have moved to this new home with an ambition to make elements accessible to the public in due course.

Fulkers Bailey Russell are providing project management and cost management services in collaboration with Sam Jacob Studios for the design and construction of the new 'Welcome Building' providing a point of arrival for visitors, a new home for the security team and a means of opening up the entrance of the site to add to the sense of arrival and welcome!

Fulkers Bailey Russell have been further involved in delivering improvements to the existing research study space within the new B1 Building including improvements to access, landscaping, M&E and furniture/joinery.

The NCC project was procured via the NHS Shared Business Services' Construction Consultancy Services 2 framework (SBS/17/NH/PZR/9256).



Exterior visualisation: entrance view @ Sam Jacob Studio

THE CHALLENGES

Overcoming Complexity: Innovating Sustainable Access to 300,000 Treasures.

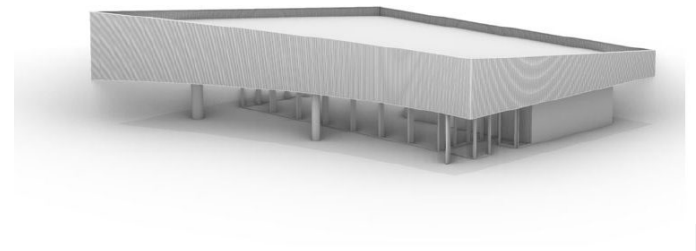
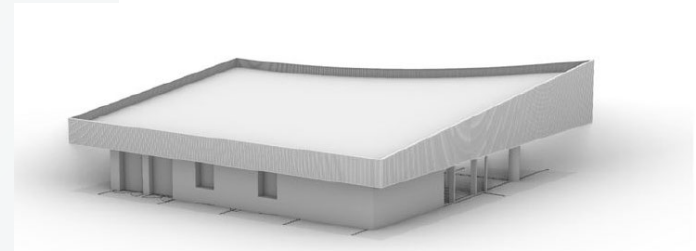
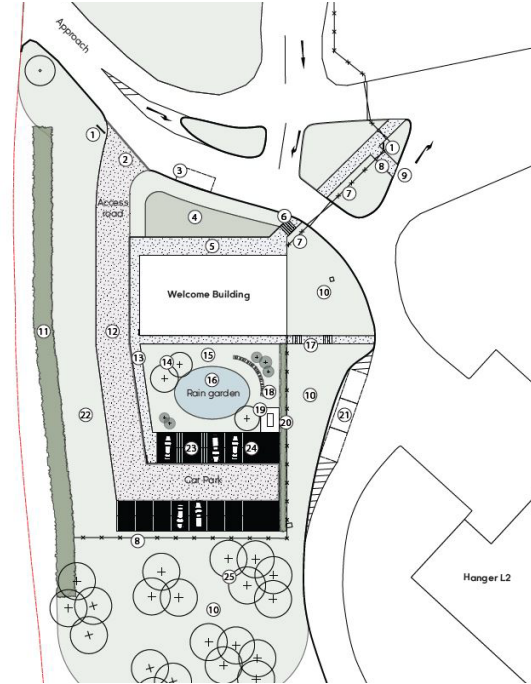
The National Collections Centre at the Science and Innovation Park in Swindon faced numerous challenges in its expansion and enhancement project. The primary challenge was creating a new, publicly accessible home for the Science Museum Group Collection of 300,000 objects. One of the first stages in this project process has been establishing a point of access and arrival to the site in the form of the Welcome Building and improvements to the site entrance.

The project required developing a facility that could handle fluctuating visitor numbers throughout the year, including school groups and researchers, while maintaining security and providing a comfortable visitor experience. Simplifying travel and improving wayfinding around the vast site, which hosts multiple buildings and extensive grounds, was another critical challenge.

The need to integrate sustainable practices into the design and construction further complicated the project. Ensuring cost certainty, programme surety, and high-quality delivery within a fixed budget of £2.2 million also posed significant challenges, especially with the need for extensive value engineering.

Image top: Building location and design principals @ Sam Jacob Studio

Image bottom: Building form @ Sam Jacob Studio



THE SOLUTION

Transforming Spaces: Comprehensive Project Management and Innovative Solutions for the National Collections Centre Expansion.

To address these challenges, Fulkers Bailey Russell is providing comprehensive project management and cost management services. They have developed a detailed procurement strategy focused on cost certainty and programme surety, aligned with the Science Museum Group's objectives.

The project includes the demolition of an existing entrance building and the construction of a new Welcome Building, designed to serve as both a security center and a welcoming environment for visitors. This building includes an internal lobby and an external covered canopy, catering to various group sizes. A new car park with soft landscaping, an attenuation pond, and sustainable drainage solutions was also developed. Additional landscaping aimed to create relaxing outdoor spaces and adaptable areas for a schools programme.

Refurbishment works within the research study space involves upgrades to furniture and joinery, improvements to M&E. The project also included landscape upgrades to improve the arrival to the building as well as the creation of external staff break-out spaces.



Exterior visualisation: view of building entrance © Sam Jacob Studio

THE RESULT

The final design is both innovative and sustainable, aligning with the Science Museum's forward-thinking ethos.

The multifunctional Welcome Building enhances the visitor experience, providing a secure and welcoming environment. The new car park and landscaping balance aesthetics and functionality, supporting the Science Museum's sustainability ethos.

The refurbished research space now offer thoughtfully designed staff and visitor areas, with improved mechanical systems. Simplified navigation, arrival facilities and improved landscaping and parking add to the overall offer.

Through collaborative and considered value engineering, the project is forecast to be delivered within the £2.2 million budget, achieving cost certainty and programme surety while maintaining high-quality outcomes.



Fulker Bailey Russell have been a pleasure to work with on this small but complex project. Their sage advice and solid Project Management and QS expertise have ensured that we will deliver a high quality project within the agreed budget.

Sarah O'Reilly
Programme Director
ONCC

To learn more, visit our website: www.fulkers.co.uk.